

---

---

---

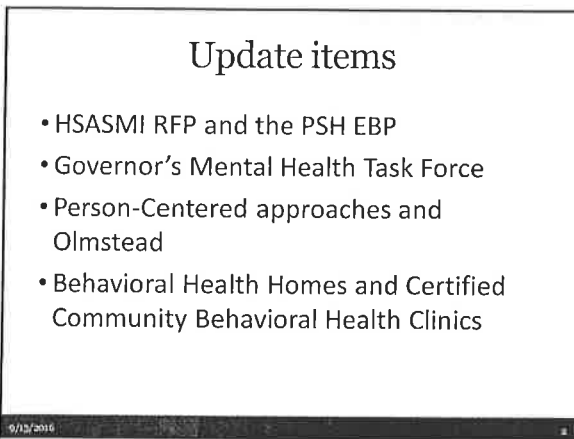
---

---

---

---

---



---

---

---

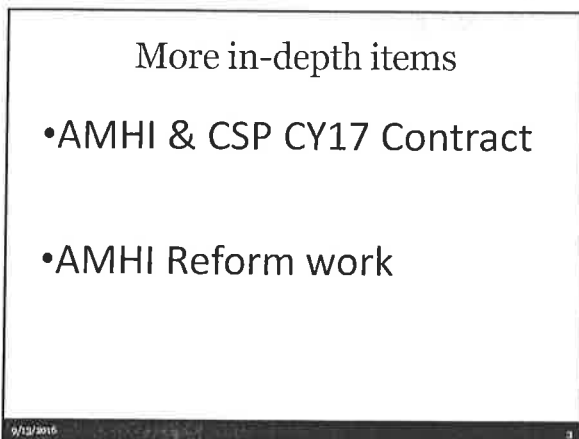
---

---

---

---

---



---

---

---

---

---

---

---

---

### HSASMI

#### •The Housing with Supports for Adults with Serious Mental Illness (HSASMI) grant

- Provides support services but not rental assistance
- Specifically seeking responses from providers from cultural, ethnic, and racial communities
- Moving towards Medicaid benefit

9/12/16

---

---

---

---

---

---

---

---

### HSASMI Grant Details

- Approximately \$3 million over 18 months
  - \$500,000 limit per grant
- RFP released August 8
  - Responders' conference August 15
  - Responses due September 30
  - Contracts to start January 2017
- Serves people with SMI who are currently experiencing homelessness, long term homelessness, or exiting a hospital, nursing home, or other institution and also have high needs

9/12/16

---

---

---

---

---

---

---

---

### Permanent Supportive Housing

- PSH is an evidence-based practice normed around homelessness and therefore more diverse populations
- **Room for flexibility – not tied to a specific housing model**
- Fidelity measures
  - Choice of housing
  - Separation of housing and services
  - Decent, safe, and affordable housing
  - Housing integration
  - Rights of tenancy
  - Access to housing
  - Flexible, voluntary services

9/12/16

---

---

---

---

---

---

---

---

### Governor's MH Task Force

- Next meeting September 26 in Cambridge, then October 17 in Rochester
- <https://mn.gov/dhs/mental-health-tf/>
- Sue Koch: [Susan.E.Koch@state.mn.us](mailto:Susan.E.Koch@state.mn.us)

9/12/16

7

---

---

---

---

---

---

---

### Governor's MH Task Force, cont'd

#### Formulation Teams:

1. Immediate Improvements in Crisis Response
2. Immediate Improvements in Inpatient Bed Capacity and Levels of Care Transitions
3. Redefining and Transforming the Continuum of Care
4. Addressing the Governance Structure
5. Using a Cultural Lens to Reduce Mental Health Disparities

9/12/16

8

---

---

---

---

---

---

---

### Governor's MH Task Force, cont'd

#### What can you do?

1. Come to a public meeting
2. Send emails to Sue Koch about anything you want
3. Send emails to Sue Koch specifically about a document on the website

9/12/16

9

---

---

---

---

---

---

---

### Person-Centered Approaches

- <http://mn.gov/dhs/partners-and-providers/continuing-care/provider-information/person-centered-practices/>
  - Has the "protocol"
- RFP coming soon to do training for CM
- Amanda Calmbacher:  
[amanda.calmbacher@state.mn.us](mailto:amanda.calmbacher@state.mn.us)

---

---

---

---

---

---

---

---

### Olmstead

- Workplans are currently being "refreshed"
  - Adding, updating
  - Done by mid-September
- Mn. Olmstead Plan (dated August 10, 2015, and accepted September 29, 2015) will be updated later in 2016
- Two websites:
  - [http://www.dhs.state.mn.us/main/idcplg?IdcService=GET\\_DYNAMIC\\_CONVERSION&RevisionSelectionMethod=LatestReleased&dDocName=opc\\_home](http://www.dhs.state.mn.us/main/idcplg?IdcService=GET_DYNAMIC_CONVERSION&RevisionSelectionMethod=LatestReleased&dDocName=opc_home)
  - [mn.gov/dhs/general-public/featured-programs-initiatives/olmstead-plan/](http://mn.gov/dhs/general-public/featured-programs-initiatives/olmstead-plan/)

---

---

---

---

---

---

---

---

### Behavioral Health Homes

- BHH – 12 certified, 9 in process, 5 interested
- \$245 per member per month rate
- \$350 one-time enhanced rate
- [http://www.dhs.state.mn.us/main/idcplg?IdcService=GET\\_DYNAMIC\\_CONVERSION&RevisionSelectionMethod=LatestReleased&dDocName=dhs16\\_177945](http://www.dhs.state.mn.us/main/idcplg?IdcService=GET_DYNAMIC_CONVERSION&RevisionSelectionMethod=LatestReleased&dDocName=dhs16_177945)
- Jennifer Blanchard:  
[jennifer.blanchard@state.mn.us](mailto:jennifer.blanchard@state.mn.us)

---

---

---

---

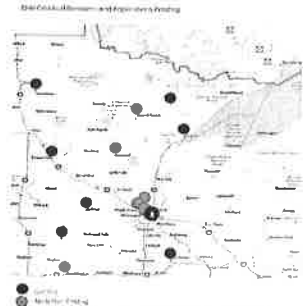
---

---

---

---

### The Map



9/12/16

13

### The list

Facility Name	Address	Locality	Phone Numbers
Central Community Health Center	811 1st Street Northeast, St. Paul, MN 55118	St. Paul	651-292-3200
Central Community Health Center	1010 Franklin Avenue Northeast, Minneapolis, MN 55418	Minneapolis	612-875-5434
Central Community Health Center	3801 42nd Avenue Northeast, Minneapolis, MN 55418	Minneapolis	612-751-4242
Central Community Health Center	808 1st Avenue Northeast, Suite 202, Minneapolis, MN 55418	Minneapolis	612-714-8078
Central Community Health Center	1937 University Ave. S.E., Minneapolis, MN 55425	Minneapolis	612-881-1608
Central Community Health Center	138 Whittaker Street South, Lake Park, MN 56126	Lake Park	651-450-3729
Central Community Health Center	601 Park Ave. S.E. 25127	St. Louis	718-778-1481
Central Community Health Center	1402 East Park Avenue, Duluth, MN 55805	Duluth	888-418-0764 (toll free)
Central Community Health Center	560 South Turner Road, Fargo, ND 58103	Fargo, ND	718-748-5801
Central Community Health Center	1400 University Ave. NE, Suite 114, St. Paul, MN 55104	St. Paul	612-802-6325
Central Community Health Center	101 1st Avenue Northeast, St. Paul, MN 55101	St. Paul	718-628-2118
Central Community Health Center	3100 W. 4th Street, St. Paul, MN 55102	St. Paul	651-556-5711
Central Community Health Center	715 S.E. 2nd Street, Grand Rapids, MN 55740	Grand Rapids	318-577-1485
Central Community Health Center	400 1st Street, Duluth, MN 55812	Duluth	718-261-3900
Central Community Health Center	401 South 3rd Street, Duluth, MN 55812	Duluth	718-269-3882
Central Community Health Center	3028 E. 78th St. NW, Minneapolis, MN 55427	Minneapolis	612-314-8770
Central Community Health Center	2713 East College Drive, Minneapolis, MN 55425	Minneapolis	651-832-3238
Central Community Health Center	1179 E. 6th St. NW, Minneapolis, MN 55412	Minneapolis	629-795-4613
Central Community Health Center	843 University Drive S.E., Duluth, MN 55812	Duluth	651-269-3028

9/12/16

14

### Certified Community Behavioral Health Clinics

- 6 community mental health centers interested in CCBHC certification
  - People Inc.
  - Ramsey Co Mental Health Center
  - Wilder Children and Family Services
  - Zumbro Valley Mental Health Center
  - Northwestern Mental Health Center
- Must have at least two certified by this fall for demonstration (1 urban and 1 rural)
- Demonstrations states will be selected by Jan. 2017
- Services begin July 2017
- <http://www.excellencectmn.org/>

9/12/16

15

### AMHI and CSP contracts

- Directly quotes the Adult Mental Health Act
- Uses terms like
  - COUNTY
  - STATE
  - Will collaborate
  - COUNTY Responsibilities

---

---

---

---

---

---

---

---

### AMHI and CSP contracts, cont'd

- COUNTY Responsibilities:
- Attachment A is the Approval Mental Health Plan i.e. the application you submitted and we approved
- Attachment B is the Budget you submitted and we approved
  - Only do a "revision" if you have a 50% deviation in a line

---

---

---

---

---

---

---

---

### AMHI and CSP contracts, cont'd

- Capital expenditures language the same
  - Nothing over \$10,000 and has the "quality"
  - Exceptions can be made
- Advances will be one quarter of your annual allocation.
  - Only paid the first quarter of the 2 year contract
  - Advance settle-up occurs at the end of the 2 year contract

---

---

---

---

---

---

---

---

### AMHI and CSP contracts, cont'd

- Advantage of a 2 year contract – you can underspend the first year to “save up” for something bigger the second year
- Payments as usual with 2895's
  - 3 options for 2895's
    - CSP
    - AMHI
    - Moose Lake

9/12/16

19

---

---

---

---

---

---

---

---

### AMHI and CSP contracts, cont'd

#### All the usual suspects:

- We can cancel for “cause or convenience,” if we get cut from the Legislature, if you breach
- DHS will not be giving you non-public data
- DHS is not paying you to create protected health information – we are not “business associates”

9/12/16

20

---

---

---

---

---

---

---

---

### AMHI and CSP contracts, cont'd

#### All the usual suspects, cont'd:

- Any IP is owned by the State, but...
- Any equipment is owned by the State, but...
  
- Everything else has been in the Award Letter for years

**Important**

**The signed contracts have to be back to me by  
December 15, 2016!**

9/12/16

21

---

---

---

---

---

---

---

---

### AMHI Reform

- **Why?**
  - 20 years old, uneven grant distribution, hard to describe/defend
- **Accomplished so far?**
  - Nancy Houlton visiting each AMHI. Asks that you start with Sue's report, agree or disagree

9/12/16

---

---

---

---

---

---

---

---

### AMHI Reform, cont'd

- **Next steps?**
  - Finish up AMHI visits
  - Workgroup later this year with AMHI reps & tribes
- **How will this turn out?**
  - Tell story, mission/goals
  - Accountability

9/12/16

---

---

---

---

---

---

---

---

### Questions?



9/12/16

---

---

---

---

---

---

---

---





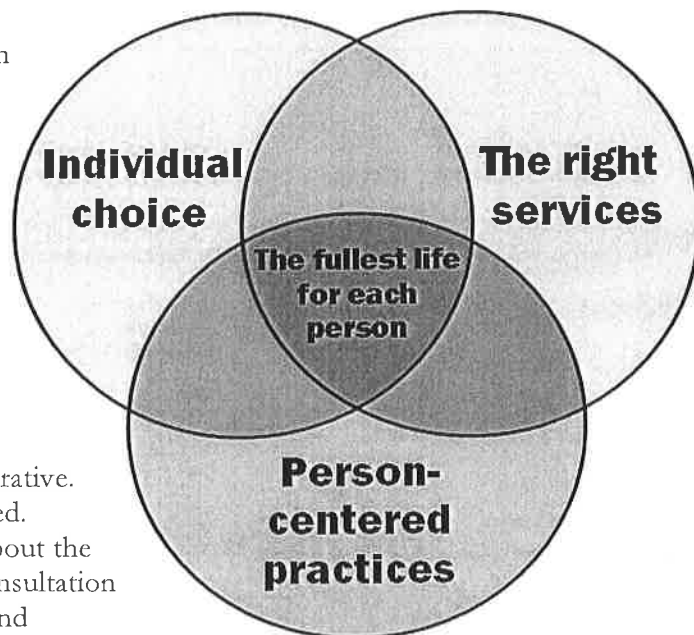
# Mental Health and Minnesota's Olmstead Plan

Recovery from mental illness is a personal journey of healing to achieve satisfaction in life, work, home and relationships. The Department of Human Services is committed to recovery and resiliency for youth, families and all persons that receive mental health services.

## Reinforcing our commitment to every individual seeking services

Minnesota's Olmstead Plan reinforces our commitment to recovery and resilience through three main tenets:

- **Individual choice**—People with mental illness are living, learning, working and enjoying life in the most integrated setting. People receiving mental health services have a choice of communities in which to live and are empowered to make changes that align with their unique preferences and needs.
- **Person-centered**—A person-centered approach promotes hope, customized services, shared power and decision-making. Preferences, strengths and cultural influences are emphasized to develop a therapeutic alliance and personalized service plan. Each person is the expert of their own life. The person's services and supports come together as a care team. There is recognition that setbacks and successes are both parts of life's goal achievement.
- **The right services**—The youth, family and person's aspirations form the foundation for service delivery. Services, referrals and resources are individualized, holistic and restorative. Culture and diversity is celebrated. Providers engage with people about the influence of culture and seek consultation and culturally-specific services and resources.



## Recovery and Resiliency in Mental Health

Minnesota's Olmstead Plan supports transformation of policies, procedures and practices to ensure individual choice, person-centeredness and the right services. Minnesota's Olmstead Plan reinforces resiliency and recovery in service delivery and design. Examples of transformation may include:

- Assessments identify different areas of how people are functioning in their everyday life. Providers may discover chemical health, primary health, spiritual health and well-being strengths and needs.
- Recovery and resiliency goals form the basis for service planning. Goals are informed by the person's and family's hope for the future.
- Shared decision making: power is shared between the person and provider and the person and the provider negotiate a final plan for change to take place.
- Documentation is written concurrently and/or collaboratively. There is an exchange of information and clarifying ideas between the person and the provider.
- The care team coordinates services and shares information based upon the person's preferences and permission.
- Individual and family choices are honored to support a journey of healing to attain satisfaction in life, school, work, home and close relationships.

## Mental Health at DHS

The Department of Human Services (DHS) is dedicated to supporting adults, children and youth with a mental illness in their personal journey toward recovery, as well as preventing mental illness whenever possible. DHS oversees a number of publicly funded programs offering community-based mental health services, creating a continuum of services designed to meet the needs of people engaging in mental health services and supports.



ARMHS—Adult Rehabilitative Mental Health Services    IRTS—Intensive Residential Treatment Services    ACT—Youth Assertive Community Treatment  
 CTSS—Children's Therapeutic Support Services    PRTF— Psychiatric Residential Treatment Facility

**For more information, visit  
[www.dhs.state.mn.us/olmstead](http://www.dhs.state.mn.us/olmstead)**